

FOUR-YEAR EXPANSION APPROVED**"The Wedding"
Featured in
Last Concert**

Igor Stravinsky's cantata "The Wedding" was presented on Monday April 8 by the St. Louis Chamber Orchestra and Chorus in the St. Louis Campus auditorium. This was the final concert in the Campus Monday Evening Series.

The cantata, a portrayal of a Russian peasant wedding, was presented twice, first in Russian than in English. The two performances were separated by a speech by Orchestra Director Arnatt on Russian peasant wedding customs and on the music and text of the cantata.

The St. Louis Chamber Orchestra and Chorus consists of twenty-five vocalists, six percussionists and four pianists. The group, well known organization of active professional musicians, rehearsed the difficult Stravinsky cantata for four months preceding its presentation here.

Mr. Arnatt, who directs the Chamber Orchestra and Chorus,

**RONALD ARNATT**

among his numerous musical activities, his position as music instructor at Mary Institute. He is also well known as an organist, composer and conductor.

Stravinsky's cantata was the last in the Concert Series organized by Mr. Charles Armbruster, St. Louis Campus Chemistry professor. Mr. Armbruster has said this first Concert series was received much better than he had ever expected.

Timetable

TODAY. . . Final day to submit entry blanks for the SA's first annual tennis Spring tournament. Easter vacation begins at the conclusion of classes.

APRIL 13. . . Intercollegiate bowling at the Arena.

APRIL 15. . . Classes resume at 8 a.m. Competition begins in the SA Tennis Tournament. 8 p.m., student Senate meeting.

APRIL 20. . . Intercollegiate bowling at the Arena.

APRIL 22. . . Daytime Lecture Series continues at 2 p.m. in room 108 with Mr. Emery Turner's "Experiences in Japan." The lecture will be supplemented by slides.

APRIL 26. . . Next edition of the TIGER CUB.

**Legislature Votes Sales Tax Hike;
Gov. Dalton Signs Transferal Bill**

The way has been cleared for the expansion of the St. Louis Campus into a full, four-year branch of the University of Missouri with the passage of a revenue bill to raise the state sales tax to 3 per cent without exempting food and drugs, and the signing of the property transferal bill by Governor Dalton.

The revenue bill, which was passed last Wednesday, April 3 by a vote of 90 to 68 in the House and 23 to 9 in the Senate, will produce an estimated \$93,000,000 to \$94,000,000 in new revenue during the next two years. By February 1, 1964, the first of the new money will reach the state Treasury. The extra revenue is slated for use in the governor's budget of increased services in education and mental health and welfare.

The inclusion of food and drugs in the tax increase has particular importance for the St. Louis Campus. Without this inclusion,

it seemed unlikely that enough revenue would have been available to expand this campus into a full, four-year branch of the University.

The sales tax proposal has been held up since March while the controversy over the areas to be covered by or excluded from the increase continued. Wednesday's decision climaxed more than three weeks of committee hearings on the matter. The appropriations committees in both houses can now begin work in earnest on the allocation of funds. In the House, committee action had been held up until the disposal of the sales tax bill.

At the same time that House and Senate approval was given to the revenue bill, Governor Dalton gave his approval to a bill permitting the Normandy School District to transfer its junior college property to the University. The bill signed by the Governor was sponsored by Representative Wayne Goode and Senator Robert Young of St. Louis County. Sale of the property to the University at a bargain price had been blocked by a statute requiring the school district to take bids and accept the highest offer. With the signing of the transferal bill, this obstacle to St. Louis Campus expansion was removed.

The governor, in signing the bill, said that the board of curators of the University now has the authority to convert the junior college into a full, four-year branch. However, a bill to permit the establishment of the branch has also been introduced into the House to insure the legality of such an action. Governor Dalton has requested \$1,750,000 for capital improvements for the branch and \$685,000 for operating purposes in the coming two years.

The sale price of this property, formerly the Belle River Country Club, will be \$60,000, although the Normandy School District purchased it two years ago at a cost of \$600,000. The site contains 128 acres. C.E. Potter, St. Louis Campus administrator, was extremely pleased with the results of the April 3 voting. He expressed the feeling that "we can now look forward to quick action by the University of Missouri in making the St. Louis Campus into a four year branch."

**Variety Show Planned for
April 27; Banquet, May 11**

Plans for the Honors Banquet to be held at the Ramada Inn on May 11 are now under way. Sharon Stephenson explained at the Student Senate meeting on April 1 that with help of her Committee, consisting of Mary Hildebrant and Jane Woods, they were able to get the dinner for \$3.25 a plate not including tax. The Senate has agreed to pay the state and gratuity tax.

125 people are expected to attend the Honors Banquet with approximately 110 guests invited. Mr. Potter has stated that some of the dignitaries which will be present as special guests are Dr. Francis English, Dean of Arts and Science; Dr. Edward Palmquist, Assistant Dean of Arts and Science; Senator Robert Young, Representative Wayne Goode and Dr. Amos Snider, Assistant Dean of the University Extension Division. Also attending the banquet as guests will be the faculty, the Office Staff, Board of Directors, the four retiring SA Officers, the four newly inaugurated officers and students nominated for honors. (See Nomination story, page 3).

In other student Senate action a proposal was approved for a Student Variety Show to be produced on the St. Louis Campus. It will be headed by Mary Hildebrant with the help of Gene Herman, student Senate Member. The show is set for April 27 and will

be held in Room 108. No admission will be charged and dress will be informal.

An amendment to Article 5 Section 2 of the Constitution was also passed. The new amendment, introduced by Bill Ebbinghaus, reads: "Senate Representatives shall be elected at large from and by each class each semester at a general election and the number of representatives elected from each class shall be of an equal proportion of Association members from each class. Ebbinghaus stated two reasons for the revision; 1) Each senator will represent the same number of students regardless of his classification of Freshman or Sophomore, and 2) There will be fair representation for Junior and Senior Class when this College becomes a four year University.

**Easter Break Begins
After Classes Today**

Easter vacation for the St. Louis Campus begins today at the conclusion of classes. The grounds and library will be open as usual tomorrow, but will be closed for the remainder of the week.

Classes will resume at 8 a.m. Monday, April 15. Negative hours will be given for absences on both Monday and Tuesday of next week.

Many Ahead to 4 on the 3rd

Wednesday, April 3, will take its place as one of the most significant dates in the history of the St. Louis Campus. On this date, Governor Dalton signed the property transferal measure by which the University will acquire this property, and the Missouri Legislature passed the 1¢ increase in the sales tax, by which the funds necessary to expand this property will be raised.

In reflecting on the outcome of the Legislature's actions we should remember Senator Robert A. Young and Representative Wayne Goode, who sponsored the property bill in their respective houses. Though the bill itself is a minor one compared with the sales tax measure, it is nevertheless a most vital step in our plans, and we owe both these gentlemen a vote of thanks for their efforts. We congratulate the SA on the special note of thanks which it sent to those legislators.

For the sales tax measure we are indebted to those far-sighted members of the House Conference Committee who refused to allow food and drugs to be exempted from the new tax, for it is these items that promise to produce the extra revenue needed for our expansion.

Thus the future of this campus is no longer in doubt--it stands on the threshold of becoming an important addition to the educational structure of the state of Missouri. The significance of April 3 in bringing us to this threshold should long be remembered.

The Paradoxical Tournament Turn-out

The SA Tennis Tournament is now being organized and is meeting with what seems to be the least possible interest from campus students. This is highly paradoxical since throughout the year we have formed the opinion that one of the activities most desired by the students is an expanded intramural program, an opinion reinforced by the inclusion of that point in both the parties and the independent's platforms.

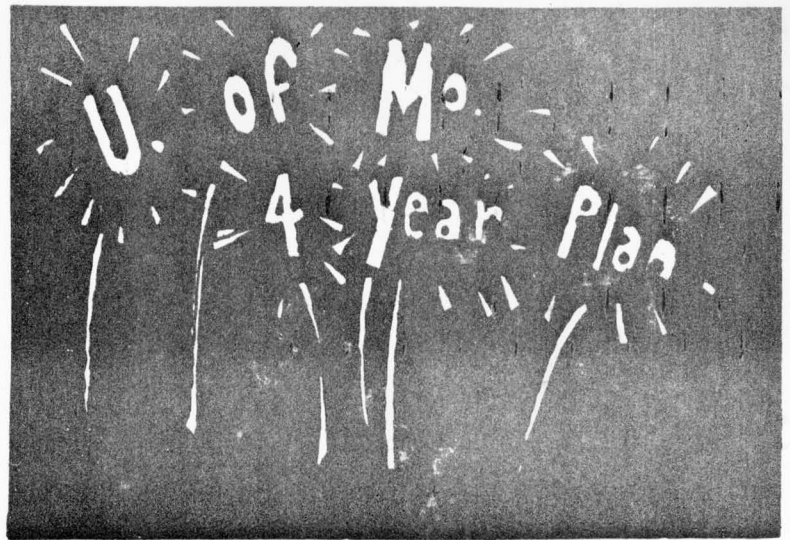
It would seem that a tournament of this kind is a practical answer for this need, since we have adequate facilities for tennis here on the Campus. Surely the nominal entry fee--50¢--cannot be the drawback, nor do we feel that the time of the competition is an obstacle since the entry blanks allow the student to choose the time at which he wishes to play.

Instead, we hope the problem lies in the fact that too few of the students are aware of the opportunity--a problem which should be easily solved by posters and articles such as this. However, if publicity is not the problem and the students are consciously ignoring the tournament, then indeed we can draw no other conclusion but that the Campus student body doesn't really have any idea WHAT it wants.

**Fighting for the Growth of the Student
TIGER CUB in the School and the School in the
Community.**

Editor-in-chief Roy Walkenhorst
Business Manager Jim Wilson
Editorial Editor Jim Rosenfeld
Copy Editor Mary Hildebrandt
News Editors Al Becker, Carol Kral
Feature Editor Barbe Wobbe
Sports Editor Pat Knarr
Editorial Staff • Mike Bernsen, Kathy Connally, Gene Herman, Sharon Hutson, Sandy Kelly, Dixie McDonnold, Larry Ryan, Barb Yaffe, John Waellner, Jane Woods

Assistant to the Business Manager Sharon Hummel
Photographer E. L. Moore and Son
Faculty Adviser Miss Clare McDonnell



We Made It

In My Opinion

By Jim Rosenfeld

Ask anyone here what disappoints him most and he will probably voice his disgust with the cafeteria, a problem with a history as long as the school itself. I believe the problem resides not only in the University and Spot Sales, but in the basic attitude of many students here.

First, there are many things that the former two parties should do. As you remember, work began

over the Xmas break to correct the cafeteria deficiencies and shortly thereafter the Health Department inspected. But, Spot Sales has still not received their rating because many things still remain to be corrected, such as: drain repair, ice cream dipper well installation, wash sink with towels and floor repairs. Surely, we were impressed with the new cooking facility, but that was not the problem.

Students Blast T C Censorship

To Whom It May Concern:

The TIGER CUB, we are told, is a student newspaper. Why has the "Here and Now, Normandy" column been censored? The person responsible is not a member of the student body. We feel that censorship by anyone other than the student editor is completely unwarranted. It is laughable to think that a nonstudent has assumed dictatorial control over what a self-sufficient student newspaper publishes. In our opinion, any faculty censorship is a slanderous insult and encroachment upon the intelligence and rights of the editor, Mr. Walkenhorst, his staff and the student body.

The editor and staff of the TIGER CUB are students who have a good idea what the rest of the students want to read. Absolutely no one has the right to tell us what we may or may not read and no one other than the editor should control what is published in the student newspaper. We want more than news and editorials, we want humor as found in "Here and Now, Normandy" and we want to read what the author wants to write.

It is common knowledge that other universities allow their students a free hand in the management of THEIR newspaper. We are constantly being told that we are in a collegiate atmosphere. Well,

Four months ago, the School District was to install screen doors at both entrances to the cafeteria to combat the fly problem. Yet there are still no screen doors, and it appears that the most basic of our cafeteria sanitation problems have not been solved.

Second in importance, but most spectacular of all, is the shabby mess which exists in the lounge portion of the cafeteria. Since the beginning of this school year, the TIGER CUB has constantly strived to create student cooperation in keeping the cafeteria in some form of a suitable living condition. It seems as though all of these past attempts have been futile. However, the blame for the present condition only rests on those people who not only throw their butts on the floor, but their plates, cups, papers, trash and even the contents of the ash trays. It is pitiful that this condition not only prevails but is accepted.

then treat us as college students and not as if we were located in a "void" between high school and college. One way to start is to stop this uncalled for and repressive faculty censorship and to let the TIGER CUB print what they wish: within the realm of good reporting.

Respectfully,
Carl Doerr
William J. Craig

(Editors Note: This letter was accompanied by 92 other signatures.)

Here and Now ... Normandy

By Mary Hildebrant

It's too bad this column doesn't make a practice of reporting on faculty activities. If it did, I could mention the infamous grudge match at the St. Charles lanes between Mr. Woodard and Mr. Murphy. Where the scores for three frames were: Murphy 0, Woodard 1; Murphy 0, Woodard 7; Murphy 3, Woodard 17. The only question is, were they bowling or playing hearts?

I could also comment on a certain American Government teacher and his trips to Northland in those brown bermudas; or about Mr. Turner's fabulous soft-ball technique of falling down on the field.

But since I fear faculty censorship, I can't fill you in on any of this. Too bad.

Maybe we could call this column morose meditations on a steam drill, or how I ate my lunch in six-eight time since it was written in the cafeteria during remodeling period. That's what I like about ye'olde St. Louis Campus: there is always the right kind of atmosphere for every activity.

And contrary to popular belief, mainly the editor's popular opinion, this is not the April Fool's issue.

Quoth Curt Brown: You mean

Flowers For All Occasions



FLORAL COMPANY

We Deliver

8606 LACKLAND ROAD

St. Louis (Overland), Mo.

HA. 7-0913

UP TO **4%** INTEREST

PUT YOUR MONEY TO WORK!!

Normandy Bank welcomes accounts from students (and faculty, too, of course) of the University of Missouri. Stop in or phone for information. We'll be happy to open your account by mail, if you prefer.

NORMANDY BANK

7301 NATURAL BRIDGE

EV. 3-5555

Member Federal Deposit Insurance Corporation

by Roy Walkenhorst

Bellerive Becomes Campus

Last of a series on the history of the Bellerive Country Club, Forebearers of the St. Louis Campus.

Bellerive entered the '20's with the same spirit and extravagance as the rest of the nation. Fourth of July festivities included shooting off nearly \$300 of fireworks across the lake "for the benefit of the children," the notices said.

With the arrival of "Black Tuesday" in 1929, however, the extravagance disappeared and the spirit was dampened. Membership dipped from the 400 limit to 261. For several years the club was forced to conduct on minimal operations, but in 1932 it bounced back with the opening of the swimming pool at a cost of \$34,000.

Club Sponsors Two Major Tournaments

The 40's brought another war and once again the keynote was "cutback." After 1945, the big news was Bellerive's entrance into the sports world. In 1949 it sponsored the Western Amateur golf tournament and in 1953 the 50th annual Western Open.

Also during this time came the last big repairs on the clubhouse; \$18,500 to fix the leaky roof and the damage done to lower floors. In 1955, the increasing distance of the club from the majority of its members brought about the decision to move to Ladue and Mason Roads.

383 Acres Purchased for New Site

By the end of that year, 383 acres had been purchased at the new site at a cost of \$670,000, and by February, 1939, the sale for \$600,000 of the property at 8001 Natural Bridge was completed.

Thus did the Bellerive Country Club end its role in the history of the St. Louis Campus and thus did 8001 Natural Bridge enter into a new era--the bounds of which are yet to be imagined, but the base of which is richly endowed with the stuff of a city's finest people.

there IS somebody ELSE in this school?

Spring madness runs rampant on the St. Louis Campus as cafeteria talk turns to plans for raids on the office in the morning to demand more heat, which are converted by the afternoon into plans for a raid on the office to demand less heat. At last report, plans have definitely been set for a raid on the office for no reason at all, which, considering the state of mind of certain students, sounds like the most logical reason they've come up with yet.

Maybe we could convince them to unite with the rebellious members of the upstairs lounge society for a riot outside the office and then tip off the janitors and nightwatchmen who can be waiting in the office with a firehose and some paper bags. The firehose could be used to knock the rioters down and then they could be put in the paper bags, because, knowing these people, they couldn't even get out of a wet paper bag.

Debate Club Meets on Problem Of Continuing Aid to Satellites

By Sharon Hutson

"Resolved: The United States Should Continue Aid to Satellite Countries," was the subject of the April 2 debate. Speakers were Tom Thompson and Jim Labitska. The negative side defended by Jim Labitska, won by a small majority. Sharon Hutson was critic, and Pat Kelley was moderator.

"Would you," asked Jim Labitska, "put your head into the cage of a hungry lion?" This, he feels, is what foreign aid does when it is given to satellite countries. Further, we are in a struggle with these people and to aid them financially we are actually frustrating our whole purpose in building U.S. defense.

Tom Thompson for the affirmative said that our aid to these countries actually helps the U.S. financially. For example, his statistics showed that in trade carried on with them U.S. exports exceed to a considerable extent what she buys from them. Again, if it were not for this aid, they would have no money to trade for our products. Finally, Poland was cited as an example of a country that has and is still trying to break with Russia. If it were not for U.S. aid, they would not have enough strength to consider such a

Procedure Given For Submitting Banquet Nominees

Nominations for the Campus' second annual Honors Banquet are now available in the Student Activities office, room 127.

Any student now enrolled in the St. Louis Campus is eligible to nominate any other Campus student or instructor for the award, which is based on a combination of scholastic achievement and service to the school. Faculty members are also eligible to make nominations.

Petitions require several reasons for the nomination of the student. SA officials also suggest that if two or more students wish to nominate the same person they should all sign one. should all sign one petition, rather than submit several identical forms.

The deadline for submitting the nominations is 3 p.m., Friday, April 26. A Faculty-Student Committee will make the final selections.

venture.

On May 7, "Hat Night" will again be presented. At this meeting topics are placed in a hat at the beginning of the meeting, the topic is read, a name is read, and this speaker has one minute to prepare. The topics he may have to speak on can be anything from Baseball to who he thinks will be the next president of the U.S.

The meeting will be held at 3 p.m. in room 133.

Mr. Armbruster Disbands Chorus

Lack of attendance has caused the St. Louis Campus Chorus to disband. In announcing the action, chorus director Charles Armbruster recalled that out of the 35 members who originally composed the choral group, only an average of 15 had attended the final meetings.

The small attendance prevented starting any new songs and thus the Chorus' plan for presenting a concert in May became impossible.

Mr. Armbruster thanked the faithful members of the choral group and said that next year he would start anew with a sound plan for the recruiting.

2 p. m.

Room 108

EXPERIENCES IN JAPAN

Monday, April 22

Mr. Emery Turner

Entries For SA Tourney Close Today

Today is the final day for submitting entry blanks for the Spring Intramural Tennis Tournament. The entrance fee is fifty cents per person.

The SA Tennis Tournament Committee will award three individual trophies for each of the following: men's singles, women's singles, and mixed doubles. Entry blanks may be obtained from any member of the SA Intramural Committee: Gene Herman, Larry Ryan and Bill Ruzicka.

"Students interested in competing in the tournament are urged to turn in their entry blanks today," stated Larry Ryan. The Intramural Committee set a minimum of ten participants in each of the singles matches and a minimum of five partners in the doubles in order for competition to be held in each of these divisions.

The tournament will begin on the Monday after Easter Vacation, April 15.

The elimination board for the tournament listing the students who will oppose each other in the first round of play will be posted on the front courts and on the downstairs bulletin board.

DRIVERS UNDER

 **Automobile Insurance 25**

Lowest Rates in Missouri

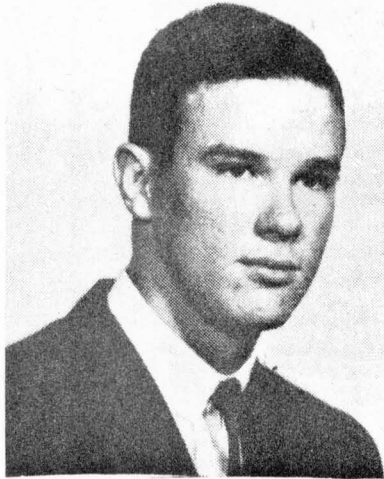
Example: Driver—age 24—
County resident — Liability
Rates only \$40.00 a year.

**ESPENSCHIED 110 South
Insurance Co. Brentwood**

PA 1-4440

Campus Bowlers Drop 2 out of 3 To Harris Teachers Five Saturday

By Larry Ryan



KEITH EILERMAN — leads the Campus bowlers with a 170 average.

The St. Louis Campus bowlers dropped two out of three to Harris Teachers College last Saturday, April 6, at the Arena Bowl. The Harris squad outbowled the Campus in total pins 2899 to 2398 in taking the series.

The first game saw the Campus on the short end of a 1000-956 total pin decision. Keith Eilerman led the team with a 170 game, followed by Mike Forgotson in the second spot with a 167. The Harris five was led by Vallina's 199 and Compton's 192.

The second game featured a rally by the Campus and a 13 pin victory -- 1017 to 1004. Leading the team again was Eilerman with a

197, followed by Henry McClintock with a 186. Vallina again topped the Harris entry with his second 199 while Compton turned in a 182.

In the third and deciding contest Harris rolled up a big 1022 to 884 victory to take the game and the series. They were led by a big 209 by Fleishmann and 187's by Vallina and Berman. Eilerman again paced the Campus with a 178. The third contest turned out to be such an off game for the Campus bowlers that in the second spot for the team was the blind, with a 156.

The Harris club out-bowled the Campus squad by a considerable margin on a man-to-man basis. Eilerman was the top man for the Campus with a 545 three-game total, but he was topped by both Vallina and Fleishmann with 585 and 552 respectively. The next high series for the Campus was Barry McClintock's 468, which was bested by all three of the remaining Harris bowlers -- Compton, 534; Berman, 531; Belleville, 497. Following McClintock in Campus scoring were Mike Forgotson, 459 and Jerry Brooks, 458.

Eilerman leads the team in overall average this season with 170. He is followed with Jerry Brooks' 160, Barry McClintock's 156 and Mike Forgotson's 143. Only three more weeks remain in the competition of the Greater St. Louis College Bowling League. All matches are bowled at the Arena 5200 Oakland avenue.

Campus Crests Now Being Made in N. Y.

The twenty crests for the basketball players, bowlers and Coach Bob Meyers are now in the process of being manufactured.

Ken Mares, sophomore senator, sent the pattern of the crest to the Gemsco Uniform Company in New York last week. He hopes to hear from the company within the next two weeks.

Mike Lindhorst commented that no plans are being made for a special assembly in which the crests will be awarded because of the unknown date of their arrival from New York. Mares will distribute the crests to the basketball players and bowlers.

The crests, which are yellow and white, are embroidered in the usual manner of athletic letters. Ken estimated the cost of each crest at 75¢.

Campus to Enter Softball Tourney; First Practice to Be Next Monday

The St. Louis Campus will enter a team in the College Softball Tournament, sponsored by Concordia Seminary, SA President Mike Lindhorst announced Monday. The tournament will be played on May 8, 9 and 10 (Wednesday, Thursday and Friday nights) on the lighted fields at Forest Park.

Lindhorst appointed Stan Shanker, former captain of University City High School's baseball squad, to head a joint SA-student committee for organizing and selecting the entry. Shanker immediately scheduled the first try-outs for the squad for next Monday, April 15. Interested students should meet in the cafeteria at 3.

All games in the tournament will be played in the evening between 6 and 11 p.m. No admission

will be charged for any of the contests. No college varsity baseball players will be eligible to compete. Although tournament rules allow for the entry of two teams from one school, the Campus will concentrate on putting together only one team.

In announcing the tournament, Eldon E. Pederson, Athletic Director of Concordia, stated that all teams will play at least two games, six will play three games. Trophies will be awarded to the Championship Team and to second, third and consolation squads.

Commenting on the tournament, C.E. Potter, resident administrator, stated that the entry would have the full support of the school. He stated that the Campus would pay the entry fee (\$15.00) and buy bats and balls for the club.

**Last Day Today
SA Tennis Tourney
Entries Close at 3 p.m.**

IF YOUR CAR NEEDS FIXIN'... SEE

**NI X ON
BROS.**

CO 1-3434
6819 W. Florissant
O'Fallon, Mo.

EV 1-1594
2525 Kienlen
CR 2-3522

GO FORMAL

Rent Your Tuxedos for Weddings, Proms

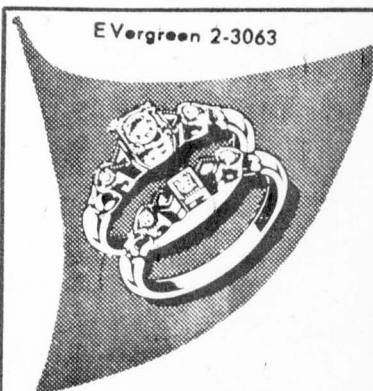
or Any Occasion

at

FERGUSON
Department Store

27 SOUTH FLORISSANT RD

FERGUSON 35. MISSOURI



EVergreen 2-3063

E. A. HORSTMAYER INC.
JEWELER—OPTICIAN

7246 Natural Bridge
Arthur E. Zbaron Arthur S. Zbaron

SPOT SALES
INCORPORATED
ST. LOUIS

Automatic Cafeterias
and Complete Vending
Machine Systems
1325 Ferguson • St. Louis

PA. 6-6767